

Journey



Why Journey?

- Four spacious floorplans
- LED ceiling lights
- Extendable dining table with buffet
- Unmatched performance of the Maxum Chassis®
- MCD solar/blackout roller shades
- TrueAir® Maximum Comfort A/C
- Ultraleather™ cab seats and lounge furniture
- Corian® countertops
- Expansive exterior storage



On the cover: 42E Java Full-Body Paint

42E Silver Birch with Coffee-Glazed Forest Cherry Cabinetry

A Better Life Awaits You in Your Journey

If life is a journey, then why not travel in style? The Winnebago Journey® is the perfect blend of luxury and comfort with Corian® solid-surface countertops and backsplashes, coffee-glazed hardwood cabinetry, Ultraleather™ furniture, and top-of-the-line entertainment

features. Not only will you enjoy world-class ride and handling with the Freightliner® Maxum Chassis®, you'll get unbelievable storage – up to 246 cubic feet – thanks to its lowered-rail design. So get out and see the country in luxurious style that makes it all the more rewarding.



Recognized Quality The RV Dealers Association bestows its annual Quality Circle Award based on dealer ratings to the manufacturers that provide exceptional products, service and support. Only one manufacturer has received this honor for seventeen consecutive years: Winnebago Industries®.

Best in Class

See how Winnebago Industries takes motorhome design and function to the next level, and why we've earned the right to be called the Most Recognized Name in Motorhomes.®



Click on this icon throughout the brochure to link to more information on the web.



Day or night, the smooth-retracting **MCD Solar/Blackout Roller Shades** give you total control over light and privacy levels.



Full-Extension Drawer Slides make it easy to open drawers wide and maximize their storage space.



Choose a set of two plush **Ottomans** for extra storage and seating or to rest your legs while relaxing on your sofa (NA 36M).



Sit back and relax after a long day in the Ultraleather **Euro Recliner** with a built-in footrest. The hoop base lets you move it to your favorite spot when parked (40U, 42E).



The **Rest Easy® Extendable Sectional Sofa** glides from a sofa to a lounge to a bed at the touch of a button (40U, 42E).





42E Silver Birch with Coffee-Glazed Forest Cherry Cabinetry

The Journey seamlessly blends premium luxuries with functional living spaces. As you enter the coach, a comfortable lounge, complete with Ultraleather furniture and a state-of-the-art Blu-Ray™ Home Theater System, welcomes you. From the superior design of the Contour windows, LED ceiling lights, and ceiling with crown molding, to the reliable TrueAir™ Maximum Comfort air conditioning system, the lounge is undeniably elegant and unquestionably comfortable.



Available Electric Fireplace (NA 34B)



42E Mid-Coach HDTV with Storage



Euro Recliner with Table (40U, 42E)



42E Galley

Whether it's an intimate dinner for two or a fun get-together with many, your beautiful galley will serve as the heart of your motorhome. Coveted amenities abound in this complete galley, featuring a microwave/convection oven, an available stainless steel French door refrigerator with an ice and water dispenser, tasteful Corian countertops, and extensive storage. With your choice of attractive cabinet finishes, including Coffee-Glazed Honey Cherry, Forest Cherry, or Vienna Maple, you can customize your galley to your personal style.



42E Pantry



Residential French Door Refrigerator



Full-Extension Drawer Slides



42E Pull-Out Island

The dining table with a buffet and the elegant, extendable dining table set the stage for enjoyable evenings spent in the luxury of your motorhome. The tabletop easily expands to allow for additional guest seating. Additional dining options include a buffet in the 34B that ingeniously houses a retractable HDTV or the innovative Glide and Dine™ table that easily extends and glides to the left or right for maximum dining comfort and usability.



42E Extendable Dining Table and Chairs



42E Dining Table Extended

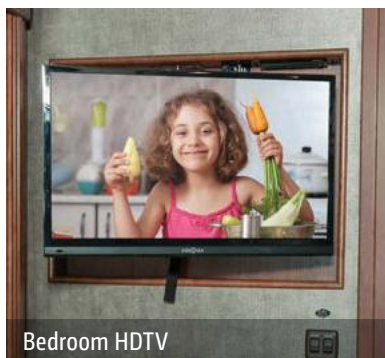
Restful nights await with the Ideal Rest® Natural Reserve digital comfort control mattress, which comes standard in the 42E and is available in other floorplans. This luxurious mattress offers fifty unique set points so you can customize firmness and support to fit your personal preference, from extra firm to feather soft. The powered bed featured in the 42E adjusts to your preferred position, so whether you are reading a book or watching the HDTV, you'll be comfortably positioned. Each floorplan offers ample bedroom storage, so you can bring the necessities as well as the extras. A sizeable, private master bathroom with the roomy BIG Shower comes standard in the 42E.



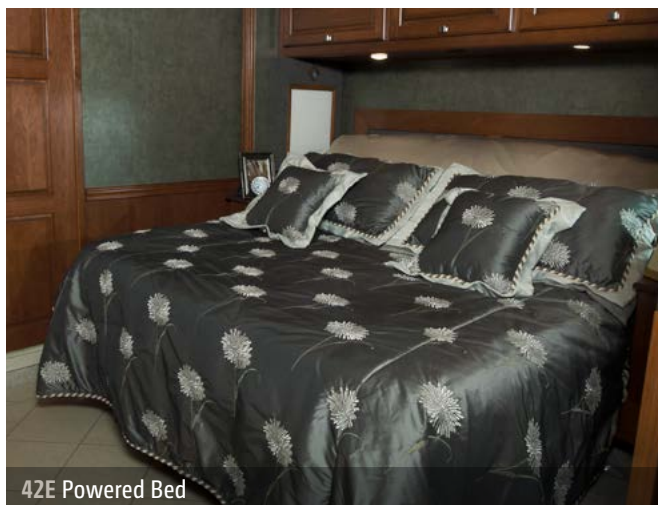
42E Powered Bed



42E Master Bath



Bedroom HDTV



42E Powered Bed



42E Half Bath

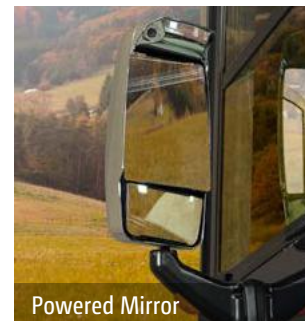


42E Wardrobe



Dash

With its signature smooth ride and handling, the cab delivers superior conveniences one would expect from a luxury diesel-pusher paired with a Maxum Chassis. The soft, Ultraleather cab seats are extremely comfortable, especially on long drives. The Infotainment Center with Rand McNally RV GPS has it all: 10.4" touch screen color monitor with split screen function, Rand McNally RV GPS safe and easy routing, amenities and tools, trips and content, turn-by-turn voice guidance, CD/DVD player, SiriusXM™ (subscription not included), compass, outside temperature, iPod®/iPhone® audio integration, Bluetooth,™ and so much more.



Powered Mirror



Available +Lounge Passenger Seat



Powered Patio Awning with Wind Sensor and LED Lighting



Available Exterior Entertainment Center with 32" HDTV



Stylized Aluminum Wheel



Available Slideout Storage Tray



Exterior Service Center with QuickConnect® and QuickPort®



Generator Pull-Out Tray

From the color-coded service center to the powered patio awning, the Journey is designed with simplicity in mind. For those warm summer evenings, a 32" HDTV is available in the exterior entertainment center. With plenty of exterior storage space including the available sliding storage trays, you can pack plenty of gear and easily access them from either side of the coach.

Fiberglass Roof The crowned, one-piece fiberglass roof is backed by a 10-year limited parts-and-labor roof skin warranty.

Thermo-Panel® Sidewalls By layering fiberglass and high-density block foam insulation with welded aluminum support structures, we create some of the industry's strongest, most durable and lightweight sidewalls.

E-Coating An electrodeposition coating helps protect critical steel components.

Embedded Steel Metal substructures embedded into the sidewall provide solid attachment points to keep cabinets and appliances mounted securely in place.

Solid Framework Aluminum extruded in our own facility to our exacting standards creates an extremely strong and solid structural framework.

Laser-Cut Tubing Precision laser cutters create precise joints in structural steel that are stronger and require less welding.



Interlocking Joints Specially engineered interlocking joints connect the floor, sidewalls and roof where competitors often rely on simple screws to bear the weight.

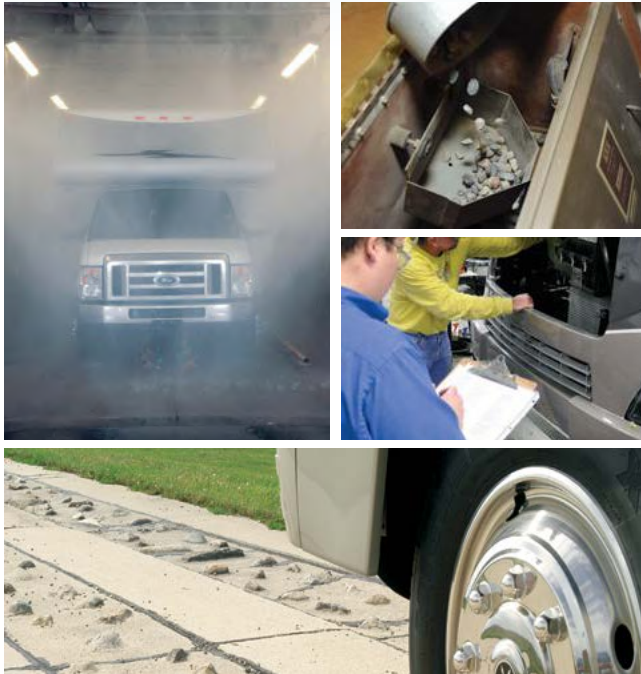


SUPER STRUCTURE

BUILT TO LAST

Every Journey is built to Winnebago Industries'® legendary SuperStructure® construction standards. It's a process developed and refined over more than 50 years of building some of the strongest, most durable coaches in the industry.

TESTING Before rolling out of our factories, every coach undergoes an extensive 113-point inspection. Each coach also passes a high-pressure water test that simulates rain at a rate of 50-inches per hour to check for leaks. During the design process, our computer simulations, physical testing center, and rigorous test track ensure each model is built to last.



DETAILS At Winnebago Industries, we treat the features you can't see with the same care as the ones you can. Look in the access panels of some of our competitors' coaches and you'll see loose insulation and wires haphazardly strewn about. Winnebago Industries maintains a clean fit and finish throughout so your coach will last for the long haul.



BUILT IN-HOUSE We extrude our own aluminum. We rotocast our own plastic components. In fact, we manufacture most of our own parts so they are designed to fit the space, rather than fitting the space to an awkward off-the-shelf component size.



**SUPER
STRUCTURE**
BUILT TO LAST

Visit BetterBuiltRVs.com to gain real insight into what goes into a Winnebago Industries motorhome.

TAKE A TOUR We're proud of our processes, state-of-the-art facilities, and the people who make Winnebago Industries number one. We invite you to visit our complex in Forest City, Iowa, for a first-hand look at the dedication and technology behind every motorhome we build.



3-point engine mounting reduces engine vibration.

Engine brake uses the engine to slow the coach, promoting longer brake life.

Allison® 3000 MH 6-speed automatic transmission includes a touchpad control for ease of use (Allison 2500 MH on 34B).

Rear axle incorporates proprietary gear machining for a smoother, quieter ride.

NeWay® rear air suspension provides superior ride and handling.

The lowered-rail design moves intrusive rails from storage areas, creating up to 246 cubic feet of storage.

Taller, 23.25" pass-through storage height accommodates bulky items compared to 19.5" similar raised-rail and 17" on a typical raised-rail.

Extra space in critical areas allows for more pass-through storage.

55° wheel cut provides a tighter turning radius and better maneuvering.

Color-coded air lines make service easy.

10,000-pound trailer hitch® (34B, 36M, 40U)

15,000-pound trailer hitch® (42E)

"Clean Air Diesel" Cummins® engine delivers hill-climbing power when you need it most:

- Cummins ISB 6.7L 340-hp (34B)
- Cummins ISB XT 6.7L 360-hp (36M)
- Cummins ISL 8.9L 380-hp (40U)
- Cummins ISL 8.9L 400-hp (42E)

Low frame rails create a lower center of gravity improving stability.

Winnebago Industries' SuperStructure integrated with the lowered-rail design creates a chassis that is seven times stronger than typical raised-rail chassis designs.

Dual-fill fuel tank.

MAXUM[®] CHASSIS

A True Work of Art

You may not be able to see the Freightliner® Maxum Chassis® as you're driving through the Rockies or cruising the coast, but you'll know it's there. Its powerful Cummins® turbo-charged diesel engine and Allison® transmission go to work so you don't have to sweat the peaks and valleys ahead.

Through a strong partnership with Freightliner, the undisputed leader in diesel motorhome

chassis, we set a new standard for handling, ride and performance in diesel chassis design.

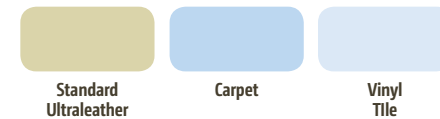
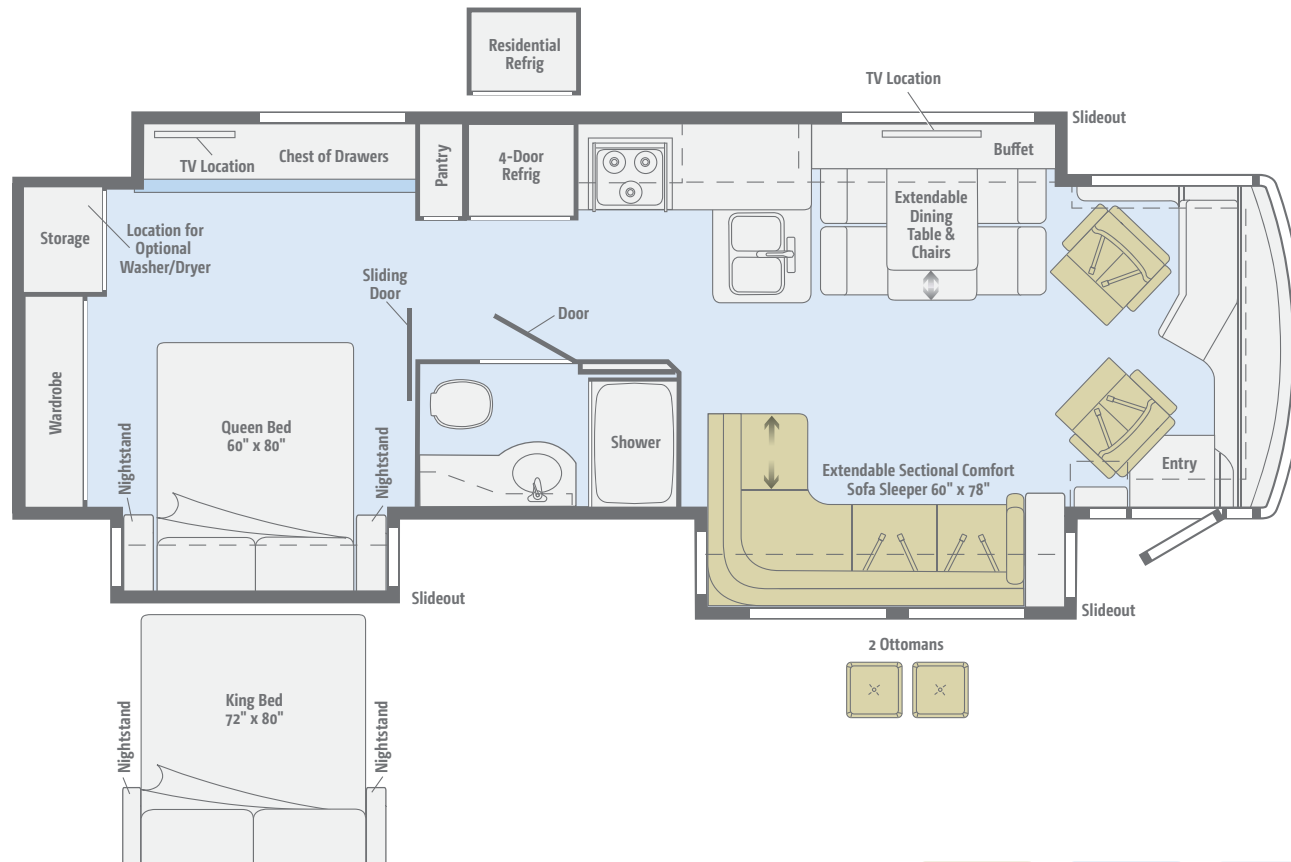
But performance doesn't mean sacrificing storage. The innovative lowered-rail design of the Maxum Chassis opens up a cavernous basement storage compartment, offering up to 246 cubic feet of storage.

4-wheel ABS anti-lock air brakes provide fast stopping power.

Michelin® tires and polished aluminum wheels look sharp.

34B

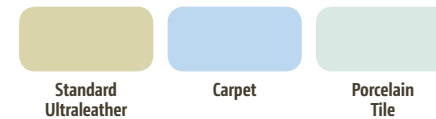
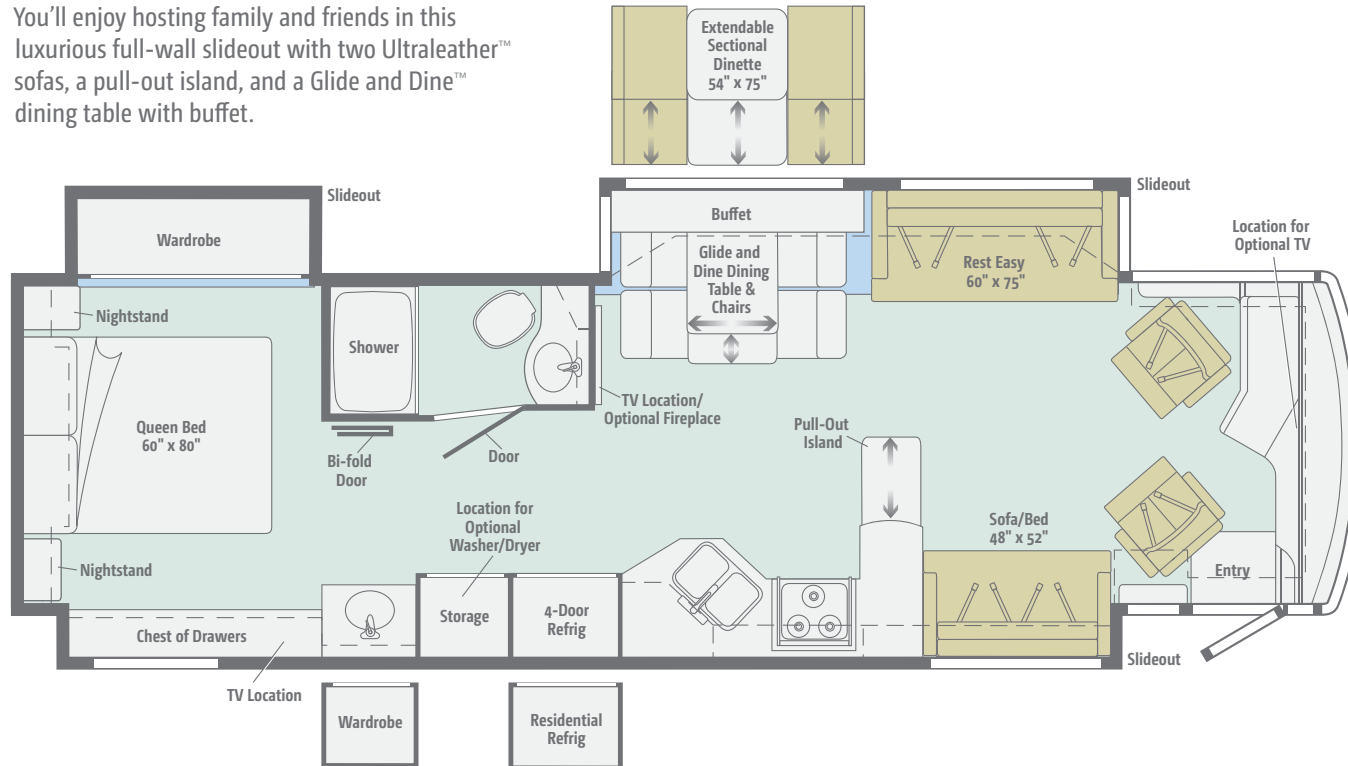
Attractive features such as a full-wall slideout, an Extendable Sectional Comfort Sofa Sleeper, and an extendable dining table with buffet are included in this elegant floorplan.



Dimensions shown are for sleeping space only and may vary due to styling differences. Dashed lines denote overhead storage areas. Floorplans and specifications are also available online at GoWinnebago.com.

36M

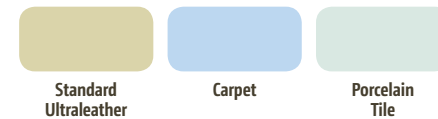
You'll enjoy hosting family and friends in this luxurious full-wall slideout with two Ultraleather™ sofas, a pull-out island, and a Glide and Dine™ dining table with buffet.



Dimensions shown are for sleeping space only and may vary due to styling differences. Dashed lines denote overhead storage areas. Floorplans and specifications are also available online at GoWinnebago.com.

40U

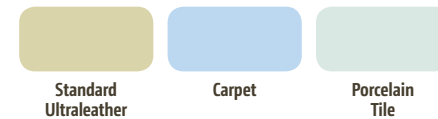
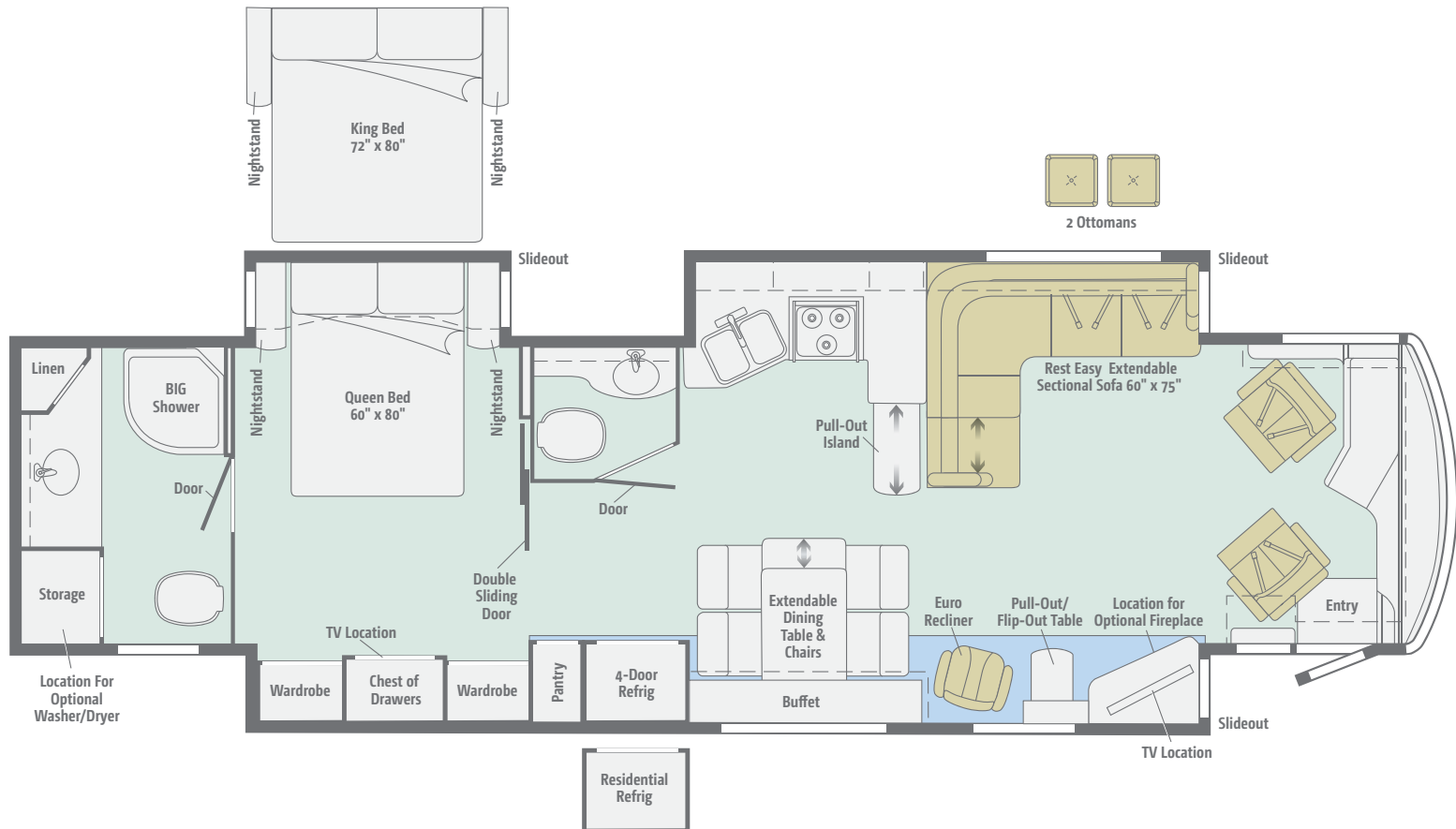
This popular quad-slideout offers a spacious lounge, complete with an Ultraleather Rest Easy® Extendable Sectional Sofa, a Euro recliner with a pull-out table, and an optional fireplace.



Dimensions shown are for sleeping space only and may vary due to styling differences. Dashed lines denote overhead storage areas. Floorplans and specifications are also available online at GoWinnebago.com.

42E

An impressive 42 feet of luxury features the Ultraleather Rest Easy Extendable Sectional Sofa, an HDTV with an available fireplace, and a private master bath with the BIG Shower.



Dimensions shown are for sleeping space only and may vary due to styling differences. Dashed lines denote overhead storage areas. Floorplans and specifications are also available online at GoWinnebago.com.

Choose from three fabric collections and three coffee-glazed wood finishes, each with Satin Nickel hardware.

Splendor



Main



Ultraleather



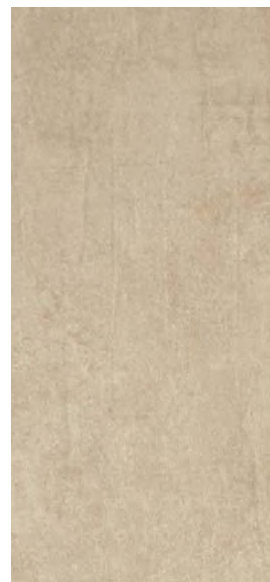
Accent



Bedspread



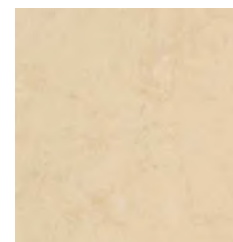
Corian Countertop



Wall Board



Vinyl Tile
(34B Only)



Porcelain Tile



Coffee-Glazed
Honey Cherry



Coffee-Glazed
Forest Cherry



Coffee-Glazed
Vienna Maple

Choose from three fabric collections and three coffee-glazed wood finishes, each with Satin Nickel hardware.

Silver Birch



Main



Ultraleather



Accent



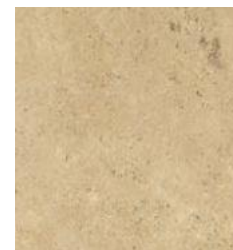
Bedspread



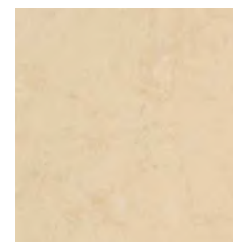
Corian Countertop



Wall Board



Vinyl Tile
(34B Only)



Porcelain Tile



Coffee-Glazed
Honey Cherry



Coffee-Glazed
Forest Cherry



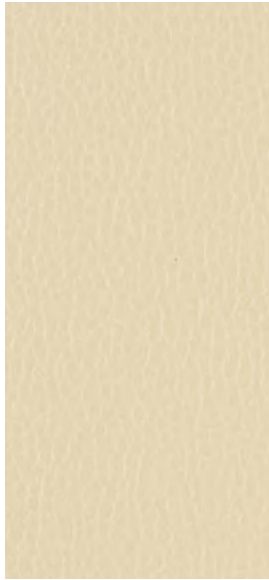
Coffee-Glazed
Vienna Maple

Choose from three fabric collections and three coffee-glazed wood finishes, each with Satin Nickel hardware.

Spectrum



Main



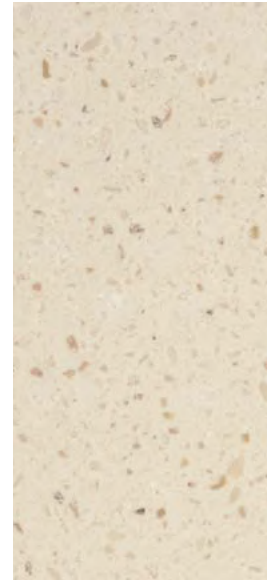
Ultraleather



Accent



Bedspread



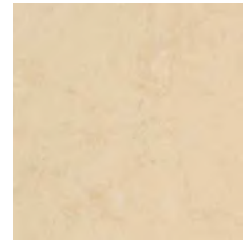
Corian Countertop



Wall Board



Vinyl Tile
(34B Only)



Porcelain Tile



Coffee-Glazed
Honey Cherry



Coffee-Glazed
Forest Cherry



Coffee-Glazed
Vienna Maple

Choose from six striking full-body paint options with a premier automotive clearcoat finish that brings more depth and shine to your Journey.



Harvest Night
FULL-BODY PAINT



Bronze
FULL-BODY PAINT

Choose from six striking full-body paint options with a premier automotive clearcoat finish that brings more depth and shine to your Journey.



Java
FULL-BODY PAINT



Garnet
FULL-BODY PAINT

Choose from six striking full-body paint options with a premier automotive clearcoat finish that brings more depth and shine to your Journey.



Cool Graphite
FULL-BODY PAINT



Spruce Grove
FULL-BODY PAINT



Weights & Measures

	34B	36M	40U	42E
Length	35'7"	37'3"	41'3"	43'7"
Exterior Height ¹	12'10"	12'10"	12'10"	12'11"
Exterior Width ²	8'5.5"	8'5.5"	8'5.5"	8'5.5"
Exterior Storage ³ (cu. ft.)	161	183	246	229
Awning Length	16'	20'	14'6"	20'
Interior Height	7'	7'	7'	7'
Interior Width	8'0.5"	8'0.5"	8'0.5"	8'0.5"
Freshwater Capacity w/Heater ⁴ (gal.)	85	85	85	85
Water Heater Capacity (gal.)	10	10	10	10
Holding Tank Capacity - Black/Gray ⁴ (gal.)	46/61	46/61	64/95	71/109
LP Capacity ⁵ (gal.)	28	28	28	28
Fuel Capacity (gal.)	100	100	100	100
GCWR ⁶ (lbs.)	33,000	42,350	47,320	59,320
GVWR (lbs.)	29,410	32,350	37,320	44,320
GAWR - Front (lbs.)	10,410	12,350	14,320	14,320
GAWR - Rear (lbs.)	19,000	20,000	23,000	30,000
Wheelbase	208"	228"	276"	279" + tag

Freightliner Maxum Chassis

340-hp Cummins® ISB 6.7L turbo-charged diesel engine (34B)

360-hp Cummins ISB XT 6.7L turbo-charged diesel engine (36M)

380-hp Cummins ISL 8.9L turbo-charged diesel engine (40U)

Tag-axle 400-hp Cummins ISL 8.9L turbo-charged diesel engine (42E)

Allison® 6-speed automatic 2500 MH transmission (34B)

Allison 6-speed automatic 3000 MH transmission (36M, 40U, 42E)

Information display center

Rear radiator

NeWay® front and rear air suspension

160-amp. alternator

Air brakes w/ABS

Engine exhaust brake

Quick-connect air connection w/manual shut off

Automatic hydraulic leveling jacks

7-pin trailer wiring

Trailer Hitch⁶ 10,000-lb. drawbar/500-lb. maximum vertical tongue weight (34B, 36M, 40U)

Trailer Hitch⁶ 15,000-lb. drawbar/1,500-lb. maximum vertical tongue weight (42E)

Stylized aluminum wheels

Cab Conveniences

Infotainment Center with Rand McNally RV GPS 10.4" touch screen color monitor w/split screen function, 2nd monitor, Rand McNally RV GPS safe & easy routing, amenities & tools, trips & content, turn-by-turn voice guidance, AM/FM radio w/CD/DVD player, steering wheel and handheld remote, SiriusXM™ (subscription not included), compass, outside temperature, iPod®/iPhone® audio integration, Bluetooth™, color rearview camera, sideview camera

Cab seats multi-position armrests, adjustable lumbar support, and multi-adjustable slide/recline/swivel

3-point seat belts

Power driver seat

Power passenger seat w/manual footrest

Cruise control

12-volt powerpoints

Powered stepwell cover

Powered MCD solar/blackout roller shades (front windshield)

Defroster fans

MCD solar/blackout roller shades (driver and passenger windows)

Chassis/house battery radio power switch

Power mirrors w/defrost, turn signal indicator, and sideview camera

TRW® tilt/telescopic steering column w/foot actuated pedal

Map lights

Power door lock w/remotes

C.B. wire prep

OPTIONAL EQUIPMENT

+**Lounger** passenger cab seat w/flip-up workstation

Interior

Dining table/buffet w/40" retractable HDTV (34B)

40" HDTV (mid-coach 36M, 40U)

46" HDTV (mid-coach 42E)

Blu-Ray™ Home Theater System amplifier, CD/DVD player, iPod/iPhone dock w/video, receiver, 5 speakers, and subwoofer (NA 36M)

Satellite system ready

Digital TV amplified antenna system

HDMI Matrix central Audio/Video Selection System

Key-activated slideroom master lock switch

MCD solar/blackout roller shades

Soft vinyl ceiling

Accent rope lighting

OnePlace® systems center

Contour tinted windows

Powered ventilator fan (galley)

LED ceiling lights

Powered roof vent (bath)

Washer/dryer prep

Home theater sound bar system (36M, 42E)

OPTIONAL EQUIPMENT

Stackable washer and dryer

Electric fireplace (36M, 40U, 42E)

Wineward® Mission® in-motion satellite TV antenna

Wineward Trav'ler® automatic HDTV antenna

40" HDTV (front overhead) (36M)



Galley

Corian® countertops and decorative backsplash

4-door refrigerator/freezer w/ icemaker

Microwave/convection oven w/vented range fan

3-burner range top w/storage below

Corian range and sink covers

Cold water filtration system

OPTIONAL EQUIPMENT

3-burner range w/oven

Residential stainless steel French door refrigerator w/water/ice dispenser and bottom freezer drawer (w/2,800-watt inverter and 2 additional 12-volt coach batteries)

Bath

Corian countertop and backsplash

Flexible showerhead

Textured glass shower door

Skylight

Porcelain toilet

Area rug (42E)

Bedroom

26" HDTV (42E)

32" HDTV (34B, 36M, 40U)

Queen bed w/innerspring mattress (34B, 36M, 40U)

Powered queen bed w/Ideal Rest® Natural Reserve digital comfort control mattress w/remotes (42E)

Bedsread, pillows, and pillow shams

Ceiling fan

OPTIONAL EQUIPMENT

28" HDTV (42E)

32" HDTV (42E)

King bed w/Ideal Rest Natural Reserve digital comfort control mattress w/remotes (34B, 40U)

Queen Ideal Rest Natural Reserve digital comfort control mattress w/remotes (34B, 36M, 40U)

Powered king bed w/Ideal Rest Natural Reserve digital comfort control mattress w/remotes (42E)

Exterior

Powered patio awning w/wind sensor and LED lighting

KeyOne® lock system

Porch lights

Powered entrance awning

Lighted storage compartments

Driver's side docking/service light

Lighted stepwell

Storage containers w/lids (4)

Movable/removable floor panels in main storage bay

Automatic entrance steps

Auxiliary side lamps

Full-width mudguard

Lower front protective mask

Premier clearcoat automotive finish

Rear mud flaps

OPTIONAL EQUIPMENT

Entertainment Center 32" HDTV

Slideout storage compartment tray

Portable refrigerator/freezer on roll-out tray (36M, 40U, 42E)

Ladder

Heating & Cooling System

TrueAir® Maximum Comfort A/C, 13,500 BTU (2 cooling units 34B, 36M; 3 cooling units 40U, 42E)

A/C heat pumps

Two 20,000 BTU ducted furnaces (34B, 36M)

One 20,000 BTU ducted furnace and one 25,000 BTU ducted furnace (40U, 42E)

Dual-zone thermostat (34B, 36M)

Triple-zone thermostat (40U, 42E)

Electrical System

Service Center lighted, cable input, 50-amp. power cord, QuickPort® shoreline/generator automatic changeover switch, portable satellite hookup

2,000-watt inverter/charger w/remote panel (2,800-watt w/optional French door refrigerator)

8,000-watt Cummins Onan® Quiet Diesel™ generator

Cummins Onan Energy Command™ automatic generator start system

Auxiliary start circuit

AC/DC electrical distribution system

4 Deep-cycle Group 31 marine/RV AGM batteries (6 batteries w/optional French door refrigerator)

Battery disconnect system (coach and chassis)

PowerLine® Energy Management System

Automatic dual-battery charge control

Chassis battery charger/maintainer

Exterior TV jack and AC duplex

OPTIONAL EQUIPMENT

100-watt solar panel battery charger

Plumbing System

Service Center pressurized city water hookup w/diverter fill, fresh water drain, drainage valves, exterior wash station w/pump switch, holding-tank flushing system, 20' sewer hose w/QuickConnect®, QuickPort

On-demand water pump

10-gallon water heater 110V/LP gas w/motoraid

TrueLevel™ holding-tank monitoring system

Winterization Package water heater bypass valve and siphon tube

Full-coach water filtration system

Permanent-mount LP tank w/gauge

LPG accessory connection (patio area)

Heated holding-tank compartment

Safety

LP, smoke and carbon monoxide detectors

10 BC fire extinguisher

Ground fault interrupter

Fog lamps

High-mount brake lamps

Daytime running lamps

Warranty⁷

12-month/15,000-mile basic limited warranty⁸

36-month/36,000-mile limited warranty on structure⁸

10-year limited parts-and-labor warranty on roof skin⁸

- The height of each model is measured to the top of the tallest standard feature and is based on the curb weight of a typically equipped unit. The actual height of your vehicle may vary by several inches depending on chassis or equipment variations. Please contact your dealer for further information.
- Floorplans feature a wide-body design - over 96" In making your purchase decision, you should be aware that some states restrict access on some or all state roads to 96" in body width. Before making your purchase decision, you should confirm the road usage laws in the states of interest to you.
- The load capacity of your motorhome is designated by weight, not by volume, so you cannot necessarily use all available space when loading your motorhome.
- Capacities are based on measurements prior to tank installation. Slight capacity variations can result due to installation applications.
- Capacities shown are tank manufacturer's listed water capacity (W.C.). Actual filled LP capacity is 80% of listing due to overfilling prevention device on tank.
- Actual towing capacity is dependent on your particular loading and towing circumstances which includes the GVWR, GAWR, and GCWR, as well as adequate trailer brakes. Please refer to the Operator's Manual of your vehicle for further towing information.
- See separate chassis warranty.
- See your dealer for complete warranty information.

Winnebago Industries® continuing program of product improvement makes specifications, equipment, model availability, and prices subject to change without notice. Published content reflects the most current product information at time of printing. Please consult your dealer for individual vehicle features and specifications.

GoWinnebago.com Has All The Answers

Visit GoWinnebago.com on your computer, smartphone or tablet for the latest product information and updates.



PREFERRED CARE PROGRAM

We back our motorhomes with best-in-class support both before *and* after the sale:

- 12-month/15,000-mile basic limited warranty
- 36-month/36,000-mile limited warranty on structure
- 10-year limited parts-and-labor warranty on roof skin
- Complimentary 24-hour roadside assistance program



TRIP Saver
FAST TRACK PARTS

- TripSaver® Fast Track Parts guarantees that in-stock warranty parts ship directly to your dealer within 24 hours
- National dealer service network



Premium
ROADSIDE ASSISTANCE



WIT CLUB

Join the Club, Join the Fun

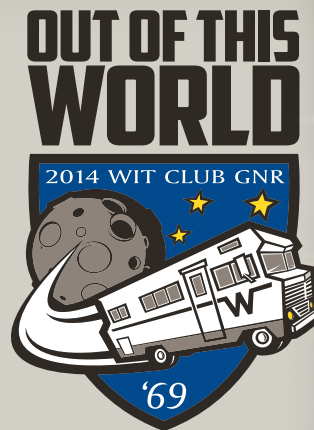
As a Winnebago motorhome owner, you are invited to join the WIT Club. It's a great way to take full advantage of your new coach and meet fun-loving WIT Club members from across the country who make motorhome adventures a way of life.



Members enjoy:

- Caravans and rallies
- Newsletters
- Local and state group activities
- RV travel benefits

See more at WITclub.com



Grand National Rally

In 1969, two things happened: Neil Armstrong took mankind's first steps on the moon, and Winnebago Industries' WIT Club launched its first Grand National Rally in Forest City, Iowa. Every year since then, thousands of rally-goers connect with old friends to enjoy concerts, tours, activities, and more. Blast off for an adventurous week in July to celebrate 45 years of interstate land roving at the 2014 "Out of This World" Grand National Rally. It's a mission you'll never forget!